

Can't Fight this Feeling
REO Speedwagon

*denotes special A E D chords shown at the bottom

Intro

| **A*** **E*** | **D*** **E*** | **F#m7** | **F#m7** |
| **D** **Dmaj7** | **D6** **Dmaj7** | **Esus4** | **E hold** |

| **A*** **E*** | **D*** **E*** | **Bm** **Bm+7** | **Esus4** **E** |
Oh I can't fight this feeling any longer And yet I'm still afraid to let it flow

| **A*** **E*** | **Gmaj7** **F#** | **Bm** **C#m** **D** | **Esus4** **E** |
What started out as friendship has grown stronger I only wish I had the strength to let it show

| **A*** **E*** | **D*** **E*** | **Bm** **Bm+7** | **Esus4** **E** |
I tell myself that I can't hold out forever I said there is no reason for my fear

| **A*** **E*** | **Gmaj7** **F#** | **Bm** **C#m** | **D** **Esus4** |
'Cause I feel so secure when we're together You give my life direction You make everything so clear

| **E** |

| **D** | **C#m** | **D** | **A** **E** |
And even as I wander I'm keeping you in sight You're a candle in the window On a cold, dark winter's night

| **D** | **F#m** | **Esus4** **E** | **D** **D hold** |
And I'm getting closer than I ever thought I might And I can't fight this

| **A** **Bm** | **D** | **A** **Bm** | **D** |
feeling anymore I've forgotten what I started fighting for It's time to bring this

| **A** **Bm** | **C#m** **D** | **Esus4** **E** | **D** **D hold** |
ship into the shore And throw away the oars, forever 'Cause I can't fight this

| **A** **Bm** | **D** | **A** **Bm** | **D** |
feeling anymore I've forgotten what I started fighting for And if I have to

| **A** **Bm** | **C#m** **D** | **Esus4** **E** |
crawl upon the floor Come crashing through your door Baby, I can't fight this feeling anymore

| **A*** **E*** | **D*** **E*** | **F#m7** | **F#m7** |
Ooh yeah

| **D** **Dmaj7** | **D6** **Dmaj7** | **Esus4** | **E hold** |

| **A*** **E*** | **D*** **E*** | **Bm** **Bm+7** | **Esus4** **E** |
My life has been such a whirlwind since I saw you I've been running around in circles in my mind

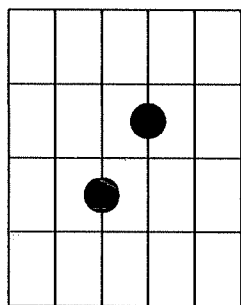
| **A*** **E*** | **Gmaj7** **F#** | **Bm** **C#m** | **D** **Esus4** |
And it always seems that I'm following you, girl Cause you take me to the places that alone I'd never find

| **D** | **C#m** | **D** | **A** **E** |
And even as I wander I'm keeping you in sight You're a candle in the window On a cold, dark winter's night

| **D** | **F#m** | **Esus4** **E** | **D** **D hold** |
And I'm getting closer than I ever thought I might And I can't fight this

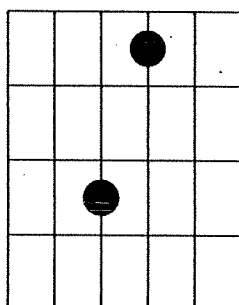
I A Bm feeling anymore	I D I've forgotten what I started fighting for	I A Bm It's time to bring this
I A Bm ship into the shore	I C#m D I Esus4 And throw away the oars, forever	I E 'Cause I can't fight this
I A Bm feeling anymore	I D I A Bm I've forgotten what I started fighting for	I D And if I have to
I A Bm I C#m D I Esus4 crawl upon the floor Come crashing through your door Baby, I can't fight this feeling anymore		
I A* E* I D* E* I A*		

A*/E
X O O O



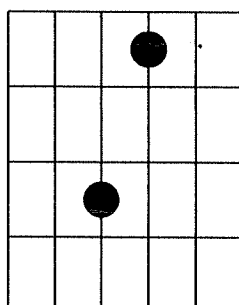
5fr.

E*
X O O O



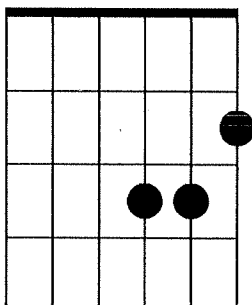
4fr.

D*
X O O O



2fr.

Bm+7
X X O



D6
X X O O

